



# Program Benefits

Senior patients with chronic pain conditions have an extremely high rate of mental health issues associated with depression, addiction, cognitive decline, and suicide. The rate of these associated mental health issues among senior patients has been steadily & rapidly increasing.

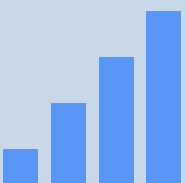
CMS has recognized this disturbing trend and the need to proactively and regularly assess these risks within this patient group. As such, CMS introduced two new CPT codes since 2019 to help all physicians better serve these patients.

The BRE program allows physicians to comprehensively utilize these new services without using their staff and without upfront costs. BRE healthcare professionals directly interact with these patients in a Medicare compliant way, allowing physicians to provide more proactive care for these patients while significantly increasing annual net income to the practice.

We support our physician clients to help them deliver better and expanded care to their senior chronic pain patients. Working collaboratively with physicians, BRE helps these patients to enjoy life more, engage with others, reduce their dependence on prescriptive medicines, and preserve and improve their current living conditions.



**SEAMLESS INTEGRATION** - The BRE Program can be running in a practice within 60-days minimal upfront costs, staff, or clinical space required.



**IMPROVED PATIENT HEALTH** - Expanded and necessary care via verified & Medicare compliant procedures result in better patient outcomes.



**INDEPENDENT AUDIT** - BRE's program has been certified by an independent CMS auditor for compliance and documentation of outcomes.



**HIGHER PRACTICE VALUATION** - BRE's highly profitable program and predictable income can increase a practice's valuation by 8-12x.



**SIGNIFICANT NET INCOME** - BRE provides consistent and predictable income. Practices average \$1,950 per patient in profit.



**REDUCED TORT LIABILITY** - Third-party documentation reduces provider exposure to increasing tort liability among senior patients.

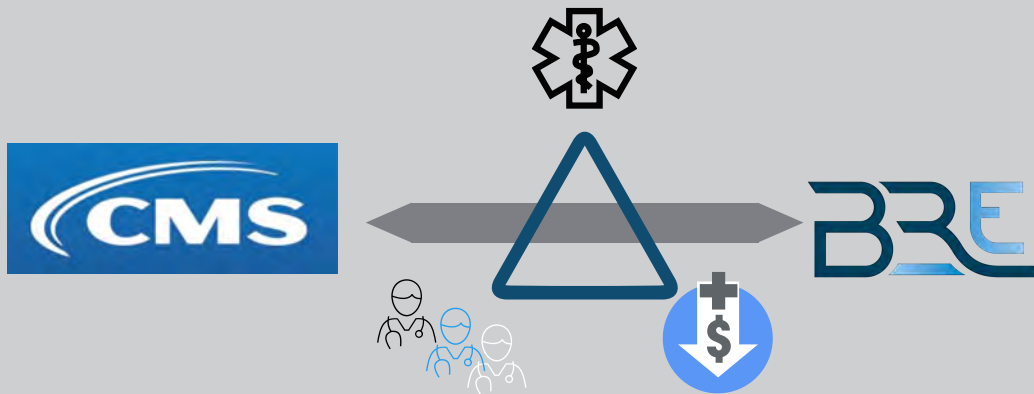


**ERROR-FREE BILLING** - The BRE program ensures that only qualifying patients will be assessed and reimbursed per payor requirements.



**PHYSICIAN EFFICIENCY** - Doctors receive graphical color-coded data on patient progress to quickly assess prior to patient encounter.

# Why Pain Management Physicians Need to Implement BRE Now



BRE supports CMS's "*Triple Aim*" objectives

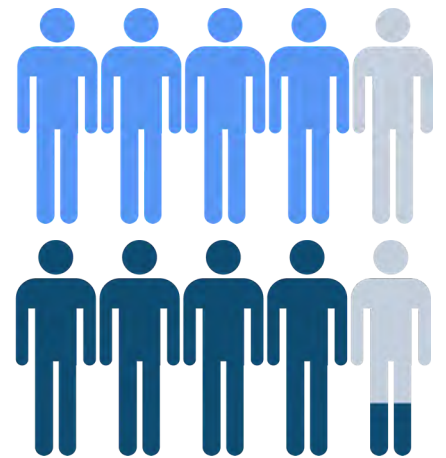
- Improve access to care.
- Improve quality of care and outcomes.
- Reduce total healthcare costs.

## 80%

of Medicare beneficiaries report suffering from chronic pain

## 85%

of chronic pain sufferers are affected by severe depression



US National Library of Medicine/National Institutes of Health, April 21, 2017

## Seniors Have The Highest Suicide Rate



- 85+ highest; 75-84 2nd highest
- 1 out of 4 suicides to attempts vs. 1 out of 20 for all other groups.
- 75% visited their PCP within 30 days of suicide.
- 50% of the time depression was not diagnosed.

NIH (National Institutes of Health) Sept 28, 2011

[www.bresystem.com](http://www.bresystem.com)

Contact: Michael Pandich/COO [michael.pandich@bresystem.com](mailto:michael.pandich@bresystem.com)